

ELMARK[®]

The Brand of Electricity

GRF1 LED GROUND FIXTURES



GENERAL INFORMATION »

- ∴ Input voltage: 24V
- ∴ Power: 5W
- ∴ LED driver: Waterproof driver
- ∴ Colour temperature: 3000K; 4000K
- ∴ LED source: Epistar LED
- ∴ Beam angle: 15°
- ∴ Material: Die-cast Aluminum
- ∴ Colour rendering index: Ra > 70
- ∴ Installation: Recessed outdoor ground mounting
- ∴ Protection against dust and moisture: IP65

AREA OF APPLICATION »

- ∴ Suitable for outdoor use
- ∴ Gardens
- ∴ Parks

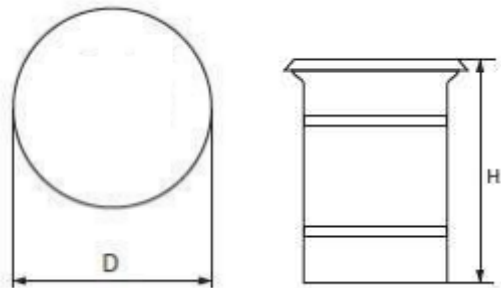
FEATURES »

- ∴ Highly efficient replacement of conventional lighting fixtures
- ∴ Low power consumption
- ∴ Repeated switch on/off does not affect the lifespan of the fixture
- ∴ Instant light with maximum luminous flux
- ∴ Environmentally friendly - no mercury and lead
- ∴ No ultraviolet and infrared rays
- ∴ Resistant to shock and vibration stable body
- ∴ Low heat emission
- ∴ Compact size

PRODUCT DETAILS »

Catalogue number	Voltage	Watt (W)	Whole fixture lumens (lm)	Colour temp. (K)
96GRF1/51524	24V	5	500	4000
96GRF1/51524WW	24V	5	500	3000

DIMENSIONS »



Catalogue number	D (mm)	H (mm)
96GRF1/51524	120	95
96GRF1/51524WW	120	95

